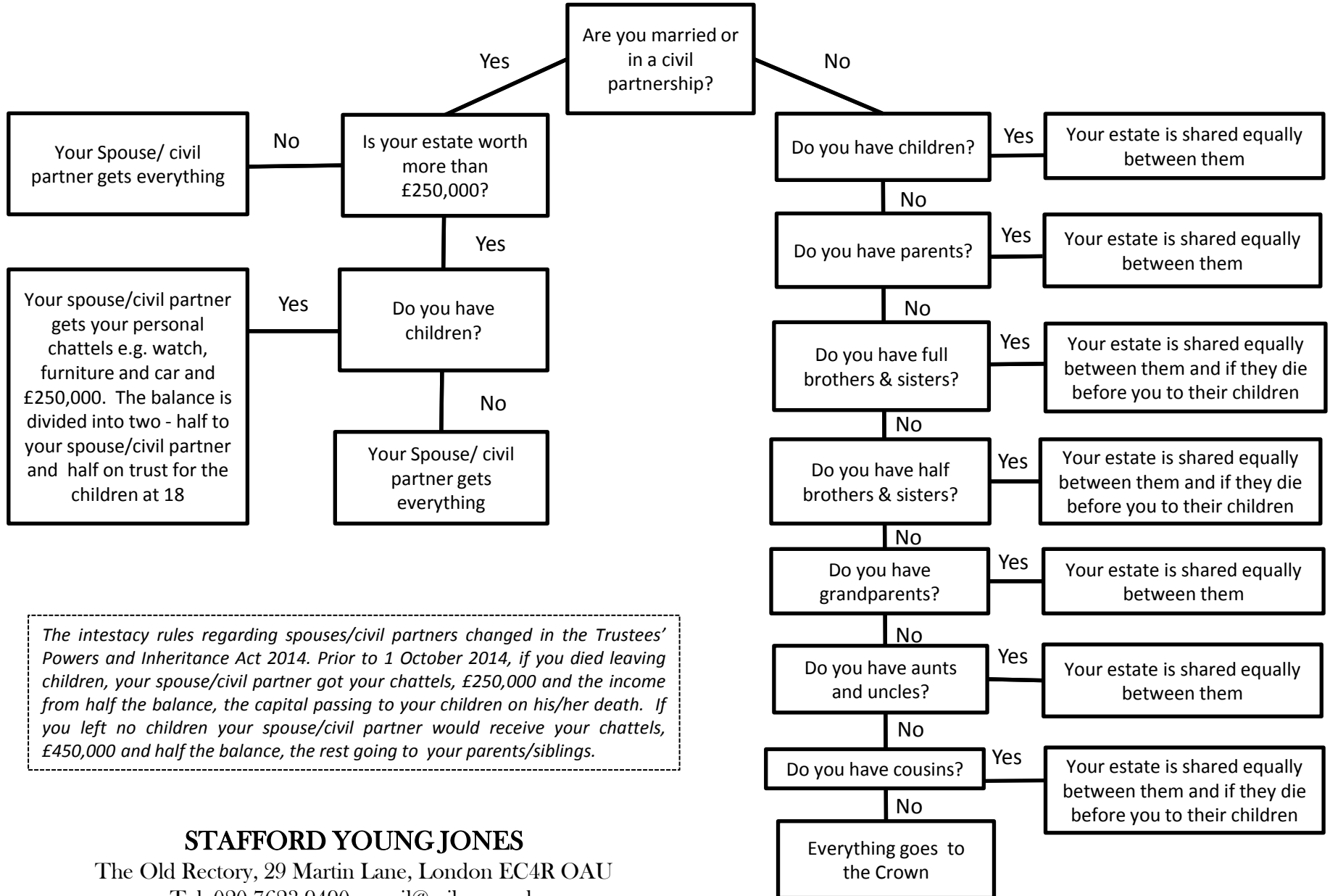


# The Intestacy Rules from 1<sup>st</sup> October 2014



*The intestacy rules regarding spouses/civil partners changed in the Trustees' Powers and Inheritance Act 2014. Prior to 1 October 2014, if you died leaving children, your spouse/civil partner got your chattels, £250,000 and the income from half the balance, the capital passing to your children on his/her death. If you left no children your spouse/civil partner would receive your chattels, £450,000 and half the balance, the rest going to your parents/siblings.*

**STAFFORD YOUNG JONES**

The Old Rectory, 29 Martin Lane, London EC4R 0AU

Tel: 020 7623 9490 email@syjlaw.co.uk